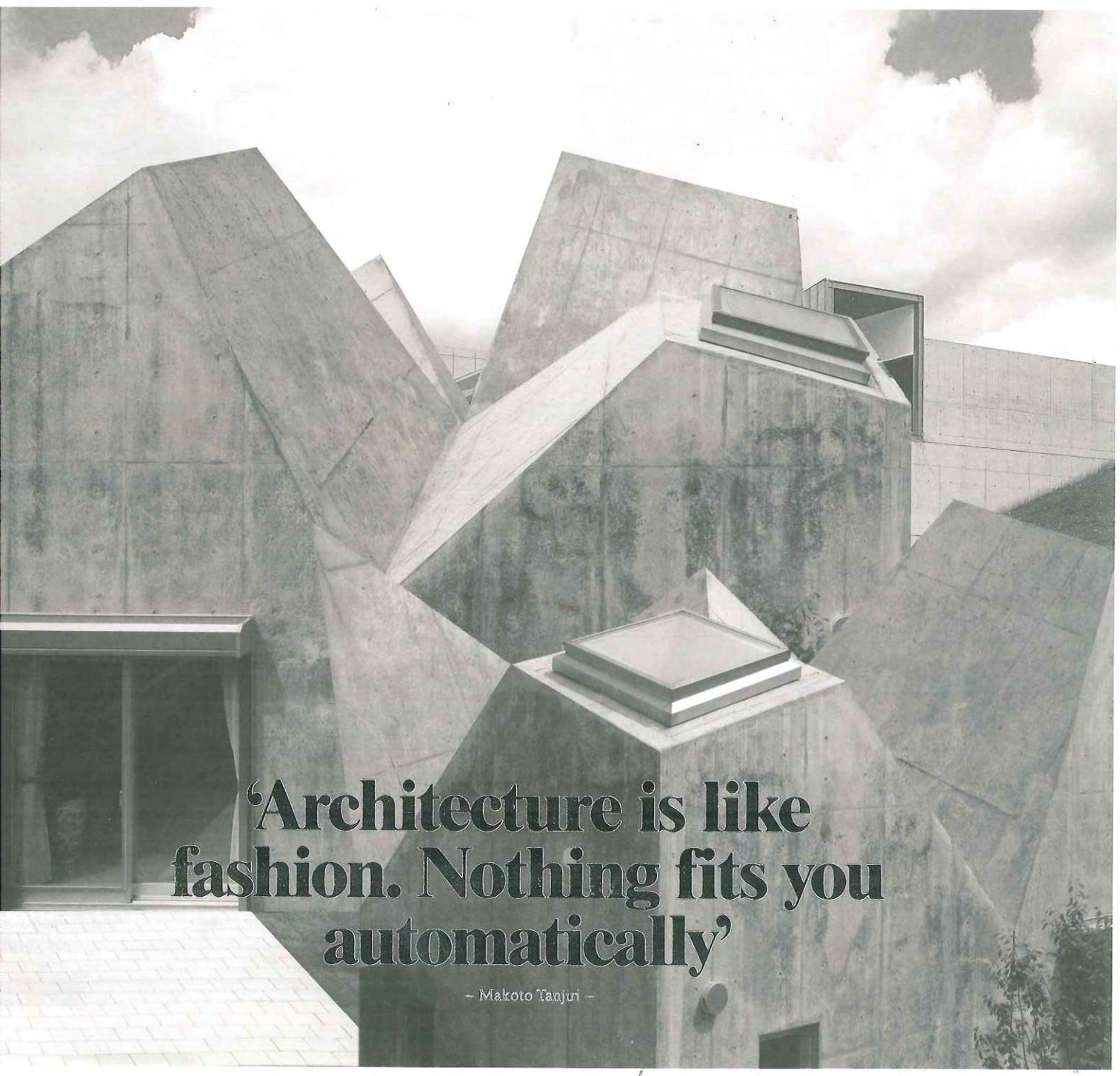


MARK

MARK Nº 17
DECEMBER 08 – JANUARY 09

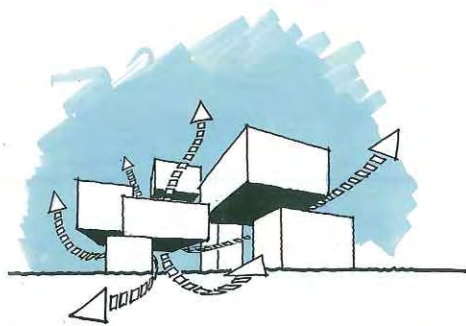
— ANOTHER ARCHITECTURE —

— BILBAO MEXICO CITY — LEKKER DESIGN SINGAPORE — ARCHITECTURE BIENNIALS — ZANDBELT & VAN DEN BERG HOEK VAN HOLLAND — SUPPOSE
— UNSANGDONG ARCHITECTS SEOUL — DOMINIQUE PERRAULT SEOUL — JAN DEMUYNCK VILVOORDE — ABANDONED AMUSEMENT PARKS — AKIHISA
— AND TORAFU YOKOHAMA — TRIPTYQUE SÃO PAULO — LETTER FROM CARACAS — MANUELLE GAUTRAND PARIS — REALITIES UNITED BERLIN



**‘Architecture is like
fashion. Nothing fits you
automatically’**

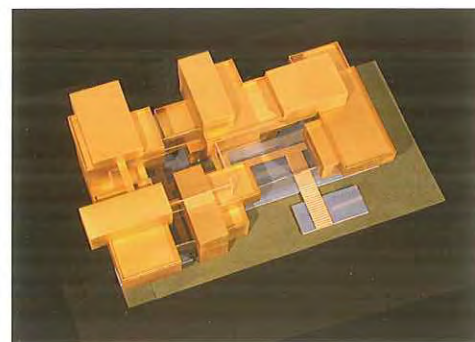
— Makoto Tanjiri —



tangram

stacks rich
amsterdam
residents
in luxury
apartments
with
a winter
garden

Text **Arthur Wortmann**
Photo **John Lewis Marshall**



Tangram Architecten recently completed a complex of 36 apartments in the top segment of the real estate market on the south side of Amsterdam. 'Crystal Court', as the project is called, is intended for wealthy homeowners who insist on living in the city, because for the same money they could buy detached villas in leafy rural surroundings. The complex also boasts the features of a full-service building: there is a live-in caretaker, catering facilities and a laundry service.

A unique aspect of the complex is the way the architects have managed to achieve high density,

even as on the ground floor – where the complex opens onto a park – an effort has been made to maintain transparency and through-views. This entailed a plan with a relatively modest footprint and volumes that project further and further outward as the building rises. Combined with the central atrium, designed as a winter garden and outfitted with terraces and skybridges, this results in a highly diverse and spectacular spatial display of sightlines. The sightlines ensure multiple opportunities for eye contact between neighbours, but the large flats luckily provide generous views of the surroundings as

well: 22 of the 36 apartments are oriented in three directions, and 14 are in fact oriented in four.

The huge projections require a light structure. The load-bearing walls are made of prefabricated concrete. For the floors, the 'Infra+' system (a hollow steel-concrete floor) was used. Partition walls are constructed of metal stud. The outer walls are clad in Western Red Cedar. The wood has been treated so that it will retain its brownish-pink hue in spite of the many different ways it is exposed to the elements.

www.tangramarchitekten.nl